

STAY IN CONTACT

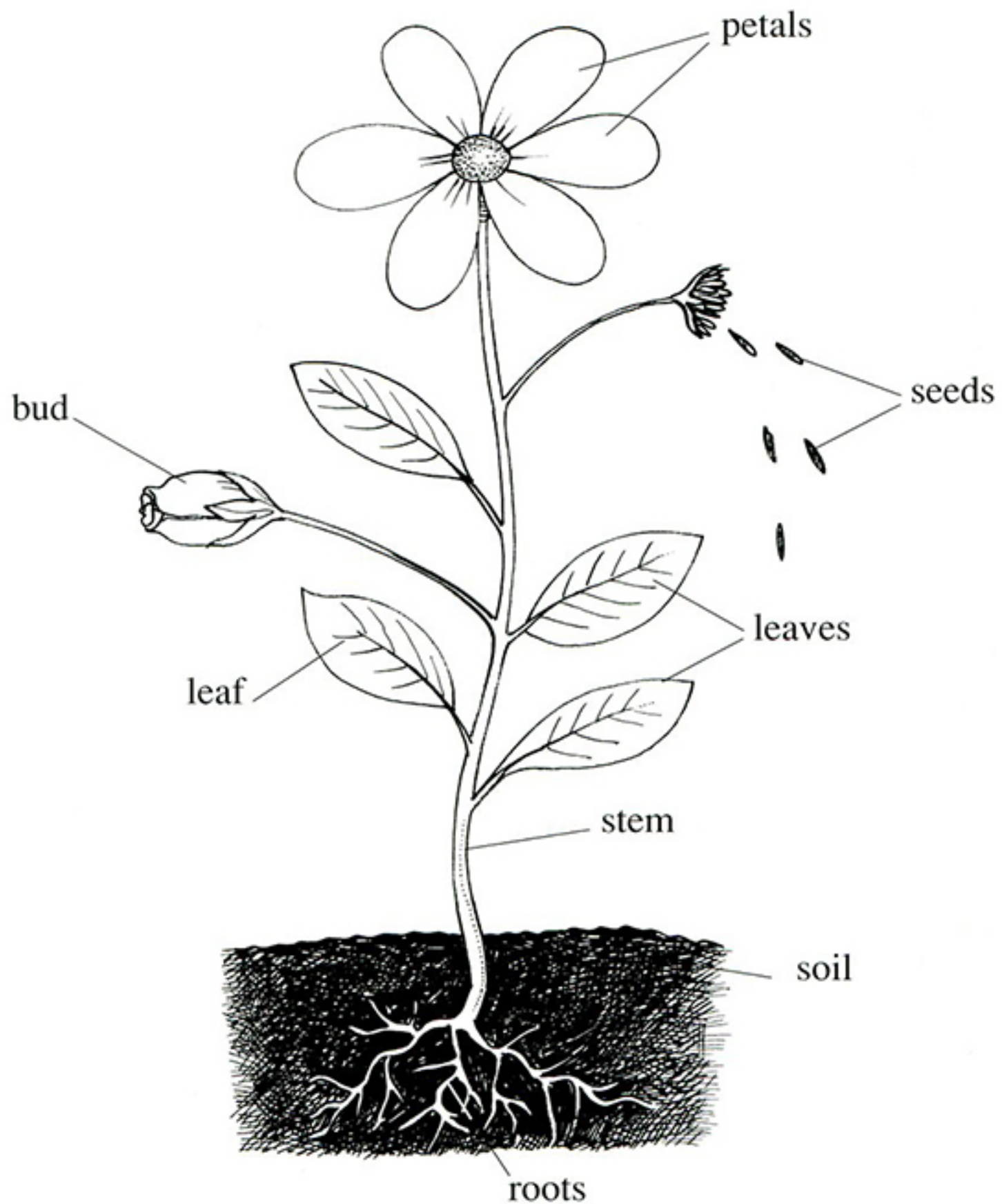
Marianne Erlandsson  
Helena Bjöersdorff Rydqvist  
AnnBrith Eliasson Labraaten

# Flowers



# The parts of a plant

---



---

**parts** - delar

**roots** - rötter

**stem** - stjälk

**leaf (leaves)** - löv (*pl*)

**soil** - jord

**petals** - kronblad

**seeds** - frön

**bud** - knopp



# Wood anemone

---



In spring you can see the white wood anemones by the thousands. It is a wonderful sight!

Not very many years ago there were just as many hepaticas. People picked them so much that they became endangered and have now been placed under protection.

You are not allowed to pick them.



*Hepaticas.*

---

wood anemone - vitsippa  
hepaticas - blåsippor

endangered - utrotningshotade  
under protection - fridlysta



# Oxeye daisy

---

She loves me? She loves me not?  
They say you can find out from  
the white petals of an oxeye daisy.  
You pull them off one by one and  
if the last one is a "not", she doesn't.  
But surely, there must be better ways  
of finding out!

This elegant flower can grow 50 cm tall  
and is found all over the country.  
Especially around midsummer.

Every flower produces more than  
a thousand seeds.

Unfortunately oxeye daisies  
don't smell very good.



*An ox.*



---

**oxeye daisy** - prästkraige  
**petals** - kronblad

**pull off** - dra bort  
**especially** - i synnerhet



# Bluebell

---

Bluebells come in many sizes.  
They all have different names.  
The most common one, the harebell,  
can be found in July and August.

They grow in dry spots, often at the roadsides  
and they usually become 20 - 30 cm tall.

Insects often find shelter from the rain  
in bluebells.  
To them they must look like blue umbrellas.

Bluebells are not worth picking,  
because they die right away from the cut.



---

**bluebell** - blåklocka

**harebell** - liten blåklocka

**roadsides** - vägrenar

**shelter** - skydd

**umbrella** - paraply

**worth picking** - värda att plockas